

# YOKE SPECIFICATIONS FOR ONYX, SILVER & ZEPHYR

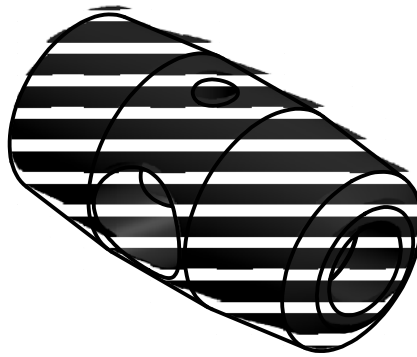
Dimensions are same for all yokes



## ONYX

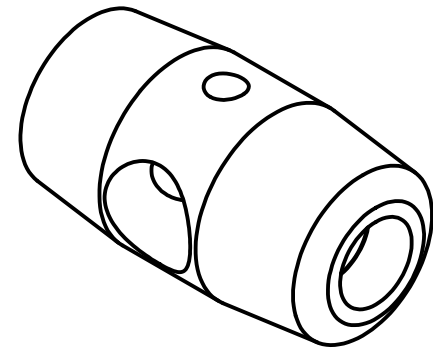
MATERIAL - Aluminium 6082 T6

FINISH - Fine fiber wheel finish  
then Black semi-gloss anodized



## SILVER

Same as Onyx

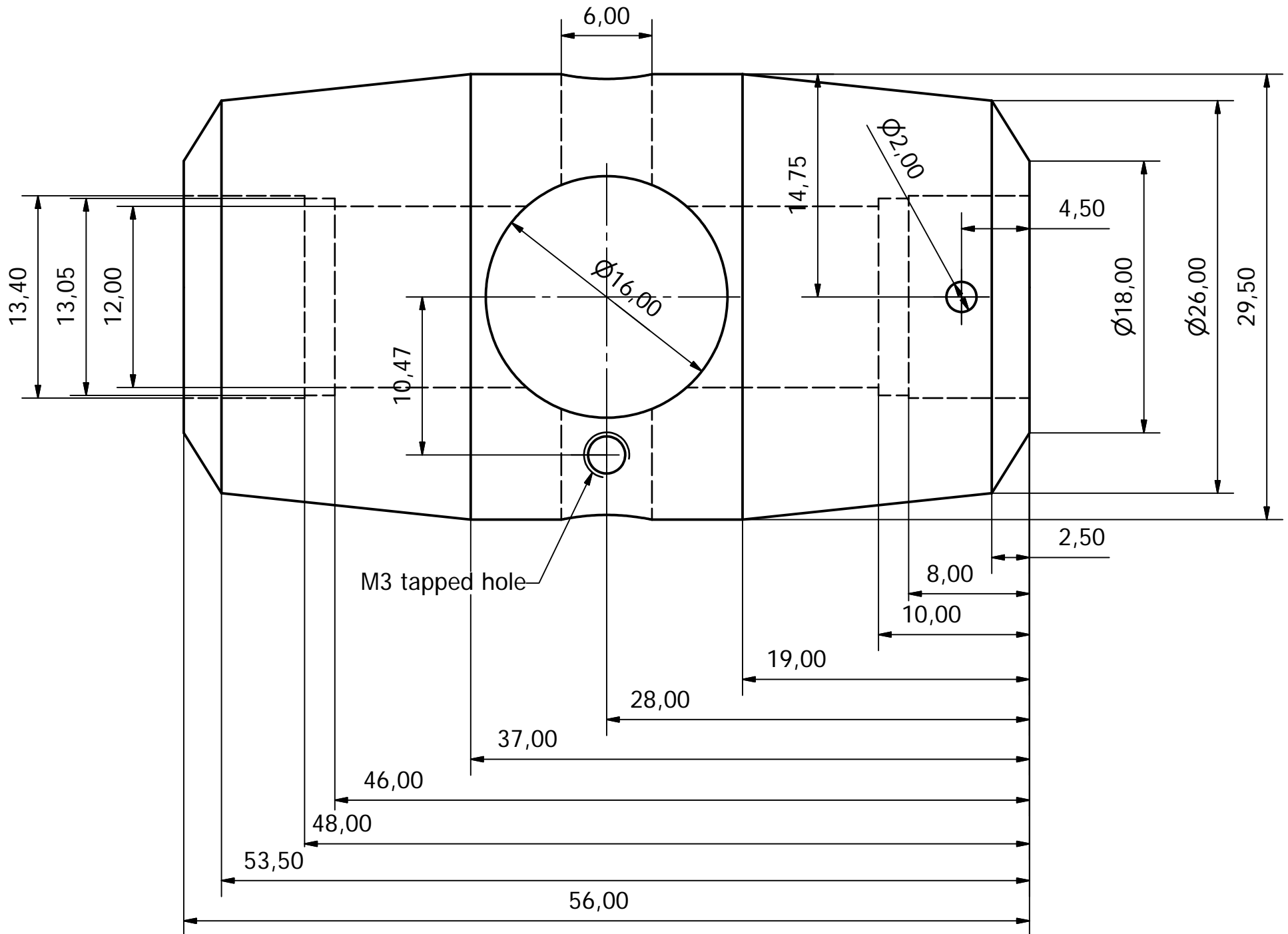


## ZEPHYR

MATERIAL - EN1A steel  
unleaded

FINISH - Polish in house and  
Chrome Nitride via Wallwork

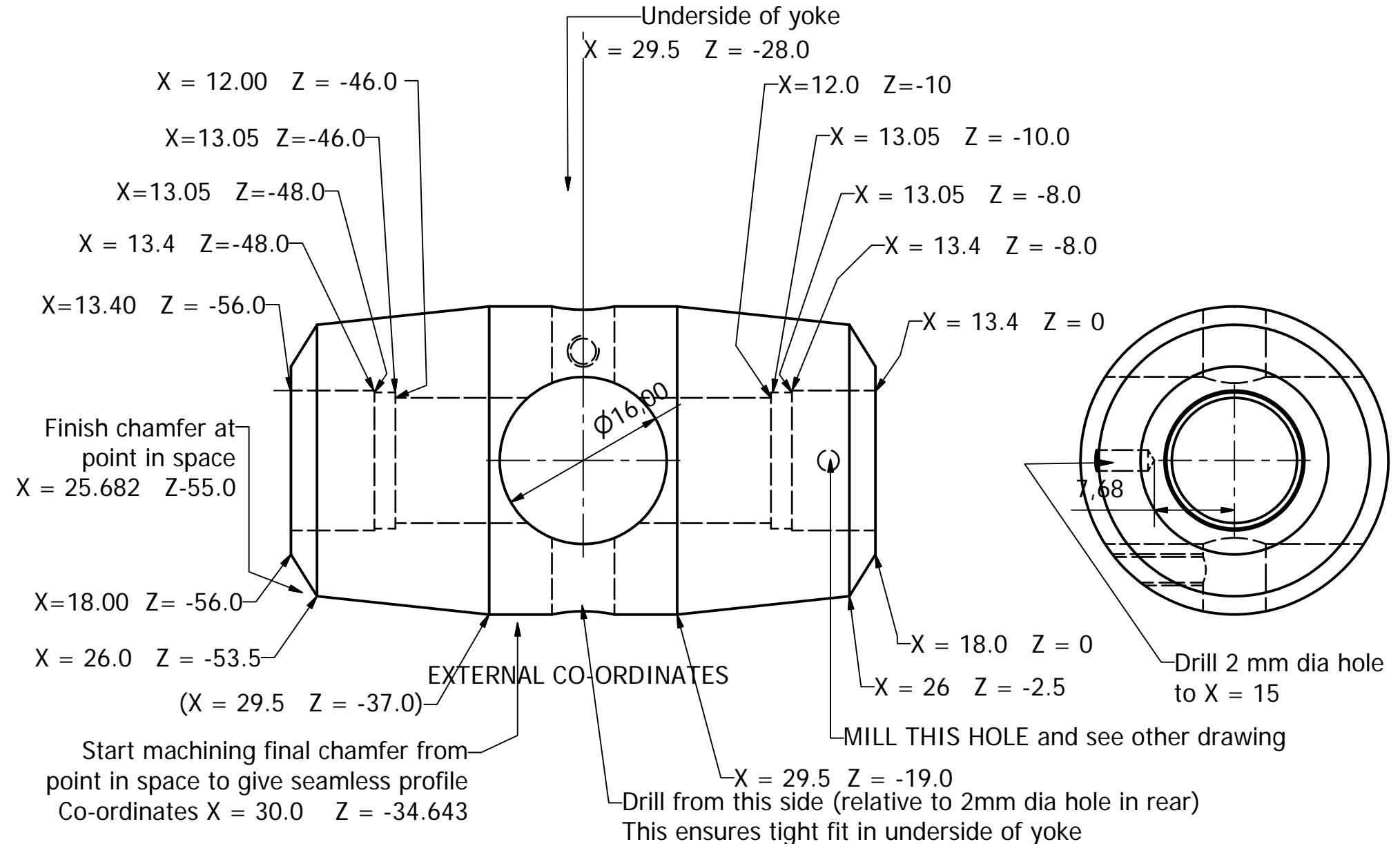
## DIMENSIONS



# YOKE FOR ONYX, SILVER & ZEPHYR

## CO-ORDINATES FOR LATHE ONLY

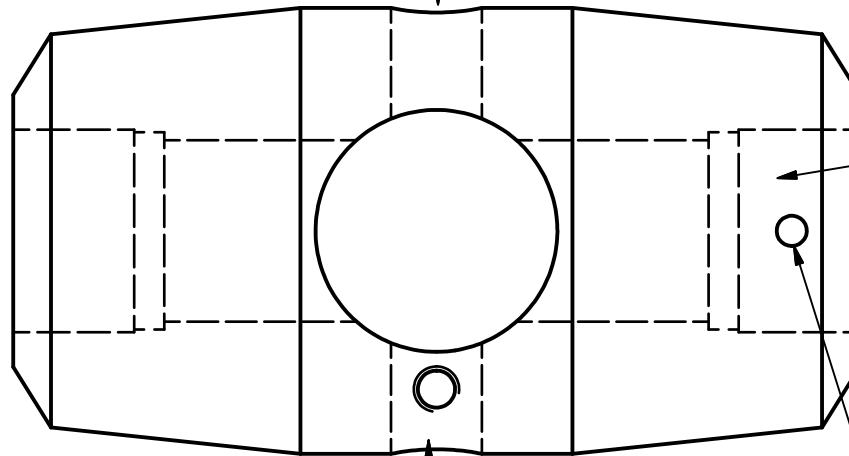
### INTERNAL BORE CO-ORDINATES



# YOKE FOR ONYX, SILVER & ZEPHYR

## CRITICAL CHECKS

The top hole is only an access hole  
and not critical for size.



Go / no go plug to allow  
bearing a sliding fit

This needs to be a tight fit for 2mm  
bias rod which is glued in

6mm hole - tight or press fit for  
vertical axis. Hole must also be at perfect 90  
degrees to horizontal axis. Use vertical axle plug  
that has been finished for a perfect bearing fit.  
This must fit with NO WAGGLE.

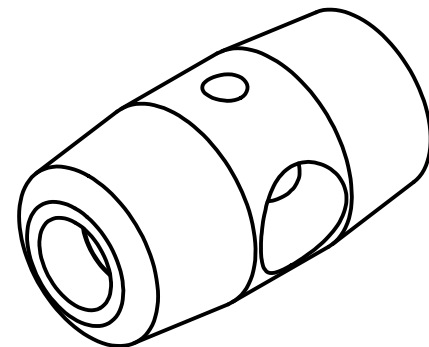
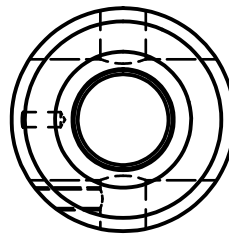
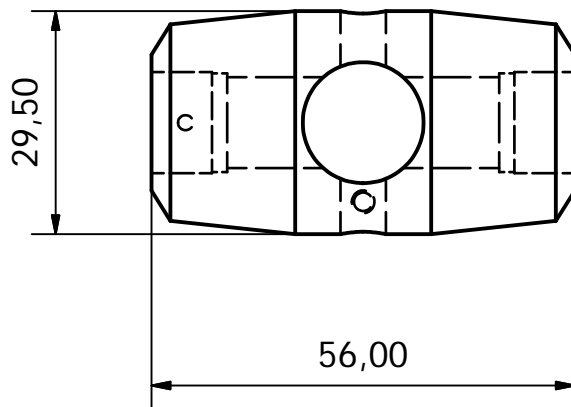
Vertical axle is glued in place or grub screwed

## DRAWING SHOWING ALUMINIUM YOKE (ACTUAL SIZE) for Bright black anodizing

Parts are fiber wheel brushed and ready for anodising

Please quote for 100 off batches

Parts are cosmetic finish and are to be individually wrapped for packing



# ZEPHYR YOKE - CHROME NITRIDE INSTRUCTIONS

MATERIAL - unleaded EN1A Steel

NOTES - Origin Live prepare the yoke for Chrome Nitride finish - There is no need to protect threads of bearing surfaces as coating thickness is only 2 - 4 microns

We polish yokes then individually wrap them to ensure no "scuffing" occurs in transit as this is a highly cosmetic finish.

